

# Double Check T-10 Parts List

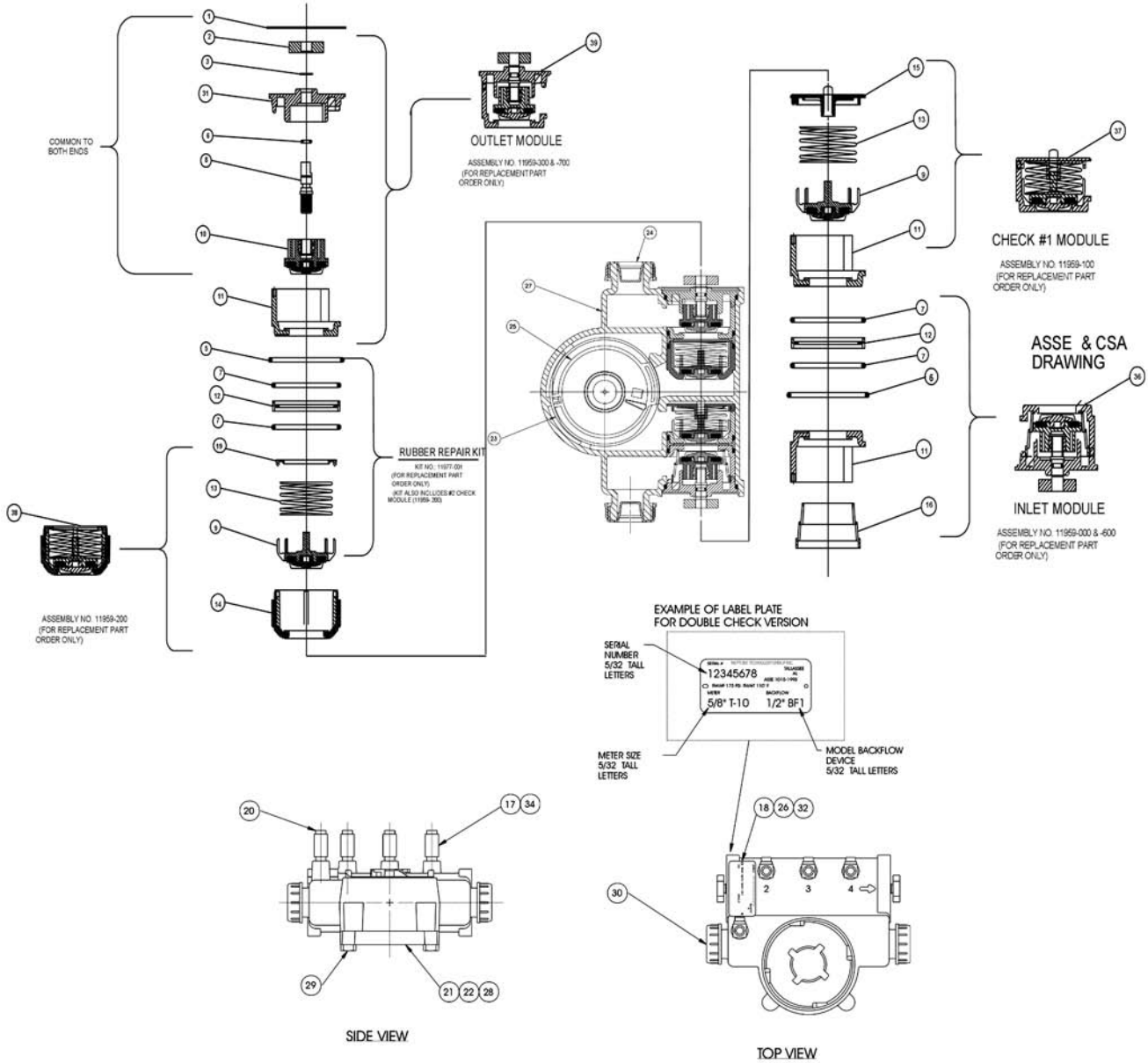


ITEM	L/C	PART NO.	DESCRIPTION	QTY	PRICE/EACH
1	P	8579-308	Retaining Ring, End Plate	2	3.40
2	P	11918-002	Knob, Shut-Off	2	.50
3	P	8579-037	Retaining Ring, Stem	2	.90
5	P	8316-121	O'ring, End Plate	2	.90
6	P	8316-046	O'ring, Stem	2	.45
7	P	8316-120	O'ring, Housing	4	.35
8	P	11937-001	Stem	2	3.30
9	A	11950-000	Poppet Valve Assembly	2	4.10
10	A	11951-000	Shut-Off Valve Assembly	2	7.90
11	P	11922-001	Housing, Universal	3	1.20
12	P	11923-001	Hoop, Test Port	2	.60
13	P	8356-534	Spring	2	.70
14	P	11925-001	Housing, Single	1	1.20
15	P	11926-001	Retainer Guide, Spring	1	.70
16	P	11927-001	Strainer, 5/8" Meter/Backflow	1	.60
17	P	8368-816	Test Cock	4	8.60
18	P	7985-032	Label Plate	1	N/A
19	P	11972-001	Retainer Plate, Check #2	1	.30
20	P	8315-023	Pipe Plug, 1/4" NPT, Plastic	4	.20
21	P	8340-028	Gasket	1	.40
22	P	9398-001	Liner	1	.70
23	P	9399-004	Strainer, 5/8" T-10	1	.70
25	A	9400-600	Chamber Assembly, 5/8" T-10	1	16.00
26	L	96018-069	Loctite 326	A/R	N/A
27	P	11917-00X	Maincase (See Spud Size table below)	1	N/A
28	P	9397-XXX	Bottom Cap (See Bottom Cap table below)	1	*
29	P	8353-XXX	Bolt (See Bolt table below)	4	*
30	P	17XX-XXX	Spud Cup (See Spud Cap table below)	2	N/A
31	P	11919-001	End Plate w/Hole	2	4.40
31	P	11919-101	End Plate w/ Hole, Silicon Brass	2	12.87
32	L	96018-070	Locquic 764 Primer N	A/R	N/A
33	L	96018-015	Aqua-Flow Lubricant	A/R	N/A
34	L	96018-056	Loctite 567	A/R	N/A
35	P	67946-004	Warning Tab (not shown)	1	N/A
36	A	11959-000	Inlet Module	1	21.45
37	A	11959-100	Check #1 Module	1	10.38
38	A	11959-200	Check #2 Module	1	10.14
39	A	11959-300	Outlet Module	1	19.83
N/A	P	5500-163	Check Valve Removal Tool (not shown)	1	62.07
N/A	P	11977-001	Rubber Repair Kit** (not shown)	1	10.26

\* These parts are standard 5/8" T-10 water meter parts.

\*\* Includes item 5 (qty 2), item 7 (qty 4) and item 9 (qty 2).

SPUD SIZE		BOTTOM CAP		BOLT		SPUD CAP		
1	11917-003	1	Cast Iron	9397-010	1	302 SST 8353-106	1	1788-008
2	11917-004	2	Bronze	9397-023	2	316 SST 8353-105	2	1789-008
		3	Plastic	9397-501				



**DIFFERENTIAL GAUGE METHOD**

To test check valve #1 (#2) for 1.0 psi in the direction of flow under normal no back pressure conditions.

The instructions for check valve #2 are provided in parentheses.

Before conducting testing, the customer should be contacted and a testing date scheduled. Just prior to testing, the customer should be notified that water service will be temporarily discontinued.

- 1 Verify that the appropriate backflow preventer is being tested and note the general conditions of the backflow preventer and the surrounding area.
- 2 Flush the test cocks. This is done to remove any lodged foreign materials that might interfere with the test.
- 3 Install flair fittings on test cock #2 and #3.
- 4 Maintain test kit and low pressure hose at **same level** as check valve. Close all needle valves.
- 5 Attach high pressure hose from test kit to test cock #2 (#3).
- 6 Close No. 2 shutoff valve (outlet).
- 7 Open test cock #2 (#3). Open the high bleed needle valve and bleed all air from hose and test kit. Close high bleed needle valve.
- 8 Close service shutoff valve; then close No.1 shutoff valve (inlet).
- 9 Open test cock #3 (#4).
- 10 Observe whether the needle on the gauge is maintained at 1.0 psi or above.
- 11 Record the results.
- 12 Close test cocks #2 (#3) and #3 (#4); disconnect the high pressure hose, and **open No. 1 shutoff valve, No. 2 shutoff valve, before opening the service shutoff valve.**

**SIGHT TUBE METHOD**

To test check valve #1 (#2) will hold back 1.0 psi in the direction of flow under normal no back-pressure conditions.

The instructions for check valve #2 are provided in parentheses.

Before conducting testing, the customer should be contacted and a testing date scheduled. Just prior to testing, the customer should be notified that water service will be temporarily discontinued.

- 1 Verify that the appropriate reverse flow preventer is being tested and note the general conditions of the reverse flow preventer and the surrounding area.
- 2 Flush the test cocks. This is done to remove any lodged foreign materials that might interfere with the test.
- 3 Install adapter (tee with ball valve) on test cock #2 (#3).
- 4 Attach a sight tube to test cock #2 (#3).
- 5 Attach a short sight tube or ell to test cock #3 (#4).
- 6 Close No. 2 shutoff valve (outlet).
- 7 Open test cock #2 (#3) and fill the sight tube so that the water level in the sight tube will be at least 28 inches above the water level at sight tube of ell attached to test cock #3 (#4). Close test cock #2 (#3).
- 8 Close service shutoff valve; then close No. 1 shutoff valve (inlet).
- 9 Open test cock #3 (#4) and open test cock #2 (#3),
- 10 Observe whether the level in the sight tube is maintained at least 28 inches above water level at test cock #3 (#4).
- 11 Record the results.
- 12 Close test cocks #2 (#3) and #3 (#4); disconnect the sight tube, and **open No. 1 shutoff valve, No. 2 shutoff valve, before opening the service valve.**

Neptune engages in ongoing research and development to improve and enhance its products. Therefore, Neptune reserves the right to change product or system specifications without notice.

**Neptune Technology Group Inc.**

1600 Alabama Highway 229  
Tallahassee, AL 36078  
USA  
Tel: (800) 645-1892  
Fax: (334) 283-7299

**Neptune Technology Group (Canada) Ltd.**

7275 West Credit Avenue  
Mississauga, Ontario  
L5N 5M9  
Canada  
Tel: (905) 858-4211  
Fax: (905) 858-0428

**Neptune Technology Group Inc.**

Ejército Nacional No. 418  
Piso 12, Desp. 1201-1202  
Col. Chapultepec Morales  
Delegación Miguel Hidalgo  
11570 México, Distrito Federal  
Tel: (525) 55203 5294 / (525) 55203 5708  
Fax: (525) 55203 6503

