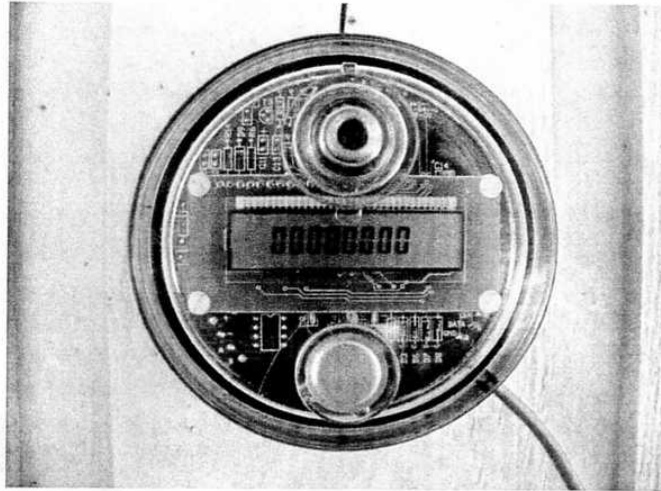


**Visu-Link
MPVL- 6**



**TECHNICAL
BRIEF**



FEATURES:

- Environmentally sealed
- Not affected by sun or water
- Connects to Meter M.I.U.
- Large easy to read display
- "TAP" switch to get current meter reading.
- Data logging (Requires Flo Pro Software)
- Rugged, durable construction.
- Impact resistant Lexan

PHYSICALS:

5" Diameter X 1½"

METER CONNECTIVITY:

- Sensus
- Invensys
- Neptune (Schlumberger) ARB 6

Operating Temperature:
-20 to 60°C (-4 to 140°F)

INSTALLATION:

The Visu-Link module has a mounting flange around the base of the unit with four pre-drilled holes for mounting. Use appropriate mounting hardware (screws, etc.) depending on your application (wood, masonry, etc.)

-Use appropriate safety equipment.

-Mount the Visu-Link right side up (the program read coil is on top and the MIU cable is located on the bottom).

-Connect the MIU cable to the meter with the following chart:

Visu-Link Module	Sensus/ Invensys	Neptune/ Schlumberger
RED-----	RED-----	BLACK
GREEN-----	GREEN-----	RED
BLACK-----	BLACK-----	GREEN

-Terminate wire connections with appropriate wire connectors. We recommend insulation displacement connectors. They provide a insulative and water-proof barrier for the spliced connection.

-Confirm installation by activating the module (activate module by tapping on "TAP" switch for visual confirmation).

-Secure all connections.

-Clean up area and tools.

-Safety is your responsibility.

Metre-Pro Technologies
101Park Central
Mineola, TX 75773
(903) 569-9700