



MTX950 MOBILE DATA COLLECTOR



The MTX950 unit can be easily and safely installed in almost any vehicle within minutes.



Neptune's MTX950 is a rugged, mobile automatic meter reading device. It can be securely placed in the passenger seat of any vehicle with a standard seat belt and powered via the vehicle power source.

The MTX950 mobile data collector receives and stores data transmitted by Neptune R900®, Itron® R300 and electric ERT® transmitters. Information is quickly uploaded to the host software at the utility office. The host software transfers the customer meter reading information to the Customer Information System (CIS) to generate customer bills.

The MTX950 unit also captures the advanced features of Neptune E-Coder™ registers connected to an R900 MIU*. These features include leak detection, tamper detection and reverse flow indication.

The MTX950 unit can be easily and safely installed in almost any vehicle within minutes. Its carrying case neatly and securely holds the power-cord, magnetic-based antenna, rugged laptop PC (used to run the MX900 software) and the RF signal receiving/processing unit.

MX900 software is designed to significantly reduce the time required to collect and process meter reading data while increasing meter reader safety and efficiency. It utilizes menu-driven commands to allow the user to effortlessly control all aspects of the meter reading process. No operator intervention is necessary once data collection has started. At any time, the operator can view either read or unread accounts with a touch of the screen.

KEY FEATURES

- Digital signal processing for improved meter reading throughput
- Portable for use in any vehicle
- Intuitive graphical user interface
- Optional GIS mapping module
- Supports Itron R300 and electric ERTs
- Supports E-Coder advanced features**
- Supported by a courteous and knowledgeable Customer Support Center

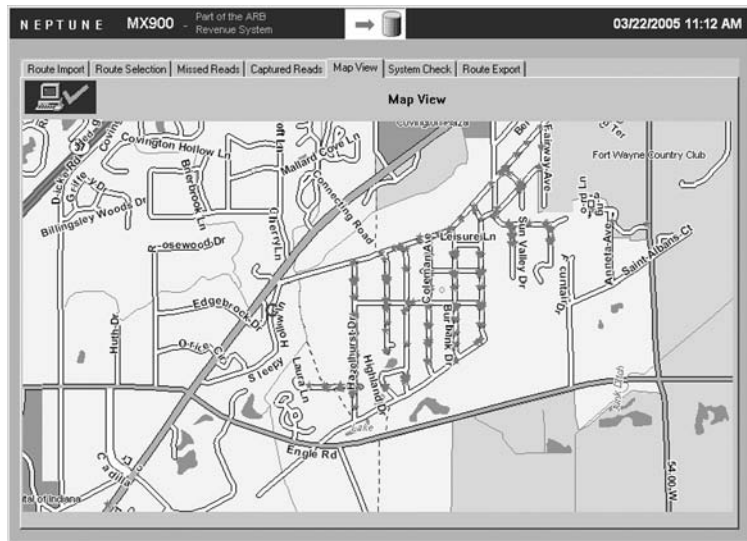
KEY BENEFITS

- Reads up to eight meters simultaneously and can process over 70 unique meter readings per second
- Maximizes meter reading success rates and overall field and office efficiency
- Reduces potential liability to utility through improved meter reader safety
- Does not require a special or customized vehicle
- Operates from standard 12V DC vehicle power source (i.e., cigarette lighter)
- Will support leak detection, tamper detection and reverse flow detection
- Courteous, prompt and conscientious Support Specialists available if needed

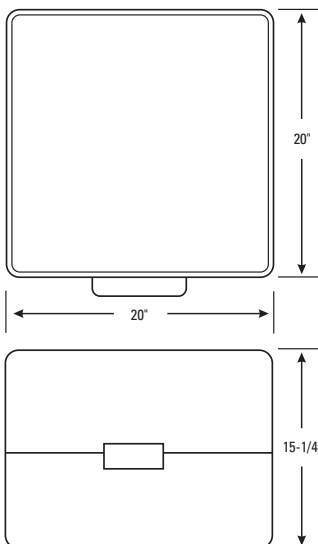
* When connected to second generation R900 or later

** Indication of E-Coder

The MX900 mobile data collection software provides an optional GIS mapping view. The map view allows the operator to monitor route completion by visually determining unread accounts which are represented as colored objects on the map. The operator can stop along the route anytime it is safe to do so and monitor each route loaded into the data collector. As an added feature, the MX900 also allows the operator to view special conditions that may exist in the route. Conditions such as Hi/Lo alarms and tamper alarms are also visible to the operator. And for those utilities with Neptune E-Coder meters, value-added warning flags such as leak detection are also available. This optional mapping package can be ordered with or added to any existing MTX950 mobile data collector. Adding the optional mapping solution could not be easier as no additional hardware is required.



DIMENSIONS



UTILITY ADVANTAGES

The MTX950 unit provides the meter reading industry with many advantages over other existing AMR systems.

- Improves meter reading accuracy
- Addresses "hard-to-read" meters
- Reads all meters loaded regardless of which route is displayed
- Increases meter reader safety
- Reduces man-hours needed to collect and process meter reading information
- Suits any size utility
- Portable and easy to set up

SPECIFICATIONS

- Electrical Specifications:
 - Power consumption: 15A w/Transmitter
 - Power supply: 12V DC via vehicle power source adapter
- Omni-directional antenna with gain of 5 dB
- FCC compliance: FCC verification: Part 15
- Rugged Laptop PC (Intel® Pentium® 1.8 GHz):
 - Fully waterproof Nitevue™ glow-in-the-dark keyboard
 - Touch pad with three button controls
 - Two USB ports - one with top plate access for easy USB Flash Drive insertion
 - Utilizes USB Flash Drive for route loading
 - Display:
 - 12.1" outdoor transmissive display
 - Touch screen
 - User adjustable contrast/intensity
 - Light sensor automatically adjusts screen intensity per ambient light
 - Shock/scratch-resistant, anti-glare plate
- Operating system: Windows® XP
- Environmental Conditions:
 - Operating temperature: 32° to 122° F (0° to 50° C)
 - Storage temperature: -40° to 185° F (-40° to 85° C)
 - Operating humidity: 5 to 95% non-condensing relative humidity
- Physical Specifications
 - Shipping weight: 68 lbs

Neptune engages in ongoing research and development to improve and enhance its products. Therefore, Neptune reserves the right to change product or system specifications without notice.

Neptune Technology Group Inc.

1600 Alabama Highway 229
Tallahassee, AL 36078
USA
Tel: (800) 645-1892
Fax: (334) 283-7299

Neptune Technology Group (Canada) Ltd.

7275 West Credit Avenue
Mississauga, Ontario
L5N 5M9
Canada
Tel: (905) 858-4211
Fax: (905) 858-0428

Neptune Technology Group Inc.

Ejército Nacional No. 418
Piso 12, Desp. 1201-1202
Col. Chapultepec Morales
Delegación Miguel Hidalgo
11570 México, Distrito Federal
Tel: (525) 55203 5294 / (525) 55203 5708
Fax: (525) 55203 6503



NEPTUNE
TECHNOLOGY GROUP

neptunetg.com